

Transforming the East Bay with a 21st Century Broadband Infrastructure



#ebbroadband

About the Consortium

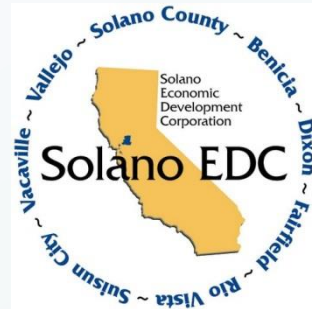
Regional Initiative of Alameda, Contra Costa and Solano County leaders

Focused on improving broadband deployment, access and adoption in the East Bay

- East Bay Broadband Infrastructure Initiative
- East Bay Connects Campaign

41 Partners from Every Sector

Steering Committee



Funders



What We've Done Already

- Broadband Technical Committee
- Three roundtable sessions
- Two region-wide summits
- Strategic plan for East Bay broadband infrastructure
- Maps and analysis of East Bay's current broadband infrastructure

What do we mean by broadband?

High Speed Internet you can access—
anytime & anywhere

Broadband Defined

Broadband is high-speed internet access that allows users to send emails, surf the web, download images and music, watch videos, join web conferences, and more.

Access is gained through:

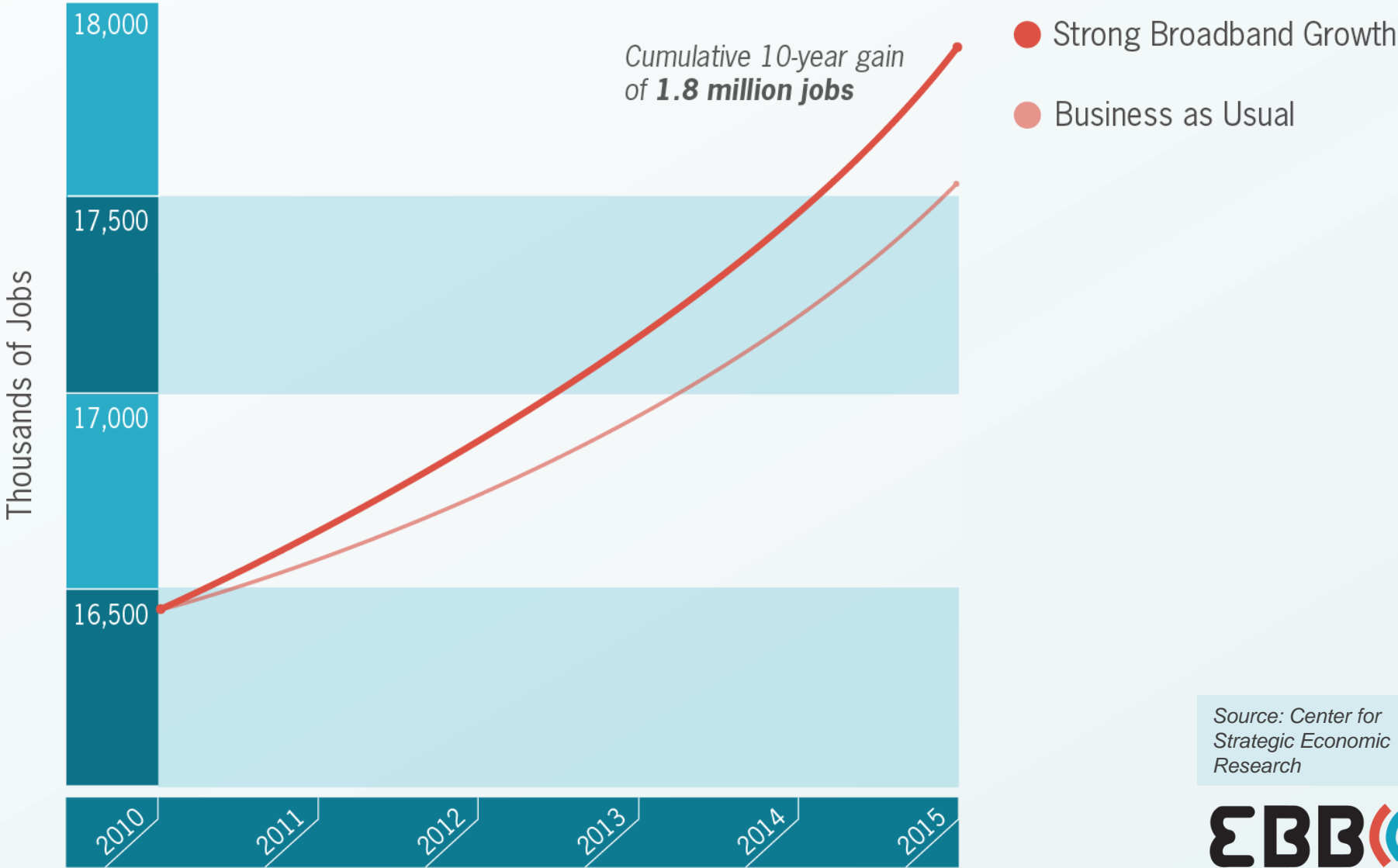
- Digital Subscriber Line (DSL)
- Cable Modem
- Fiber
- Wireless
- Satellite

Why Does Strong Broadband Matter?

- Increase economic competitiveness
- Improves public health, education and safety
- Attracts new businesses and creates new jobs
- Provides best services possible to residents
- Builds sustainable communities

Example: Broadband & Jobs

California Employment Forecasts








Source: Center for Strategic Economic Research

The East Bay



How Are We Doing on Residential Broadband?

Residential Broadband Grading Criteria

-  **A** Two competing providers, both advertising **maximum download speeds at least 25 Mbps** and maximum **upload speeds of 6 Mbps**, or 3 or more competing providers offering that standard of service in combination.
-  **B** Competing providers, both advertising **maximum download speeds of at least 10 Mbps** and maximum **upload speeds of 6 Mbps**.
-  **C** Competing providers, one advertising max down/up speeds of at least **10/6 Mbps** and the remainder meeting CPUC's minimum 6 down/1.5 up standard.
-  **D** At least one provider advertising speeds that **meet the CPUC's minimum standards** of 6 Mbps down and 1.5 Mbps up.
-  **F** At least one provider offers service, but **no service is available that meets the CPUC's minimum standard** of 6 Mbps down and 1.5 Mbps up (underserved). Or no service at all (unserved).

How Does a Community Get an “A”?

Features of a community with an “A” grade:

- Two or more providers
- Strong internet speed
- Large capacity

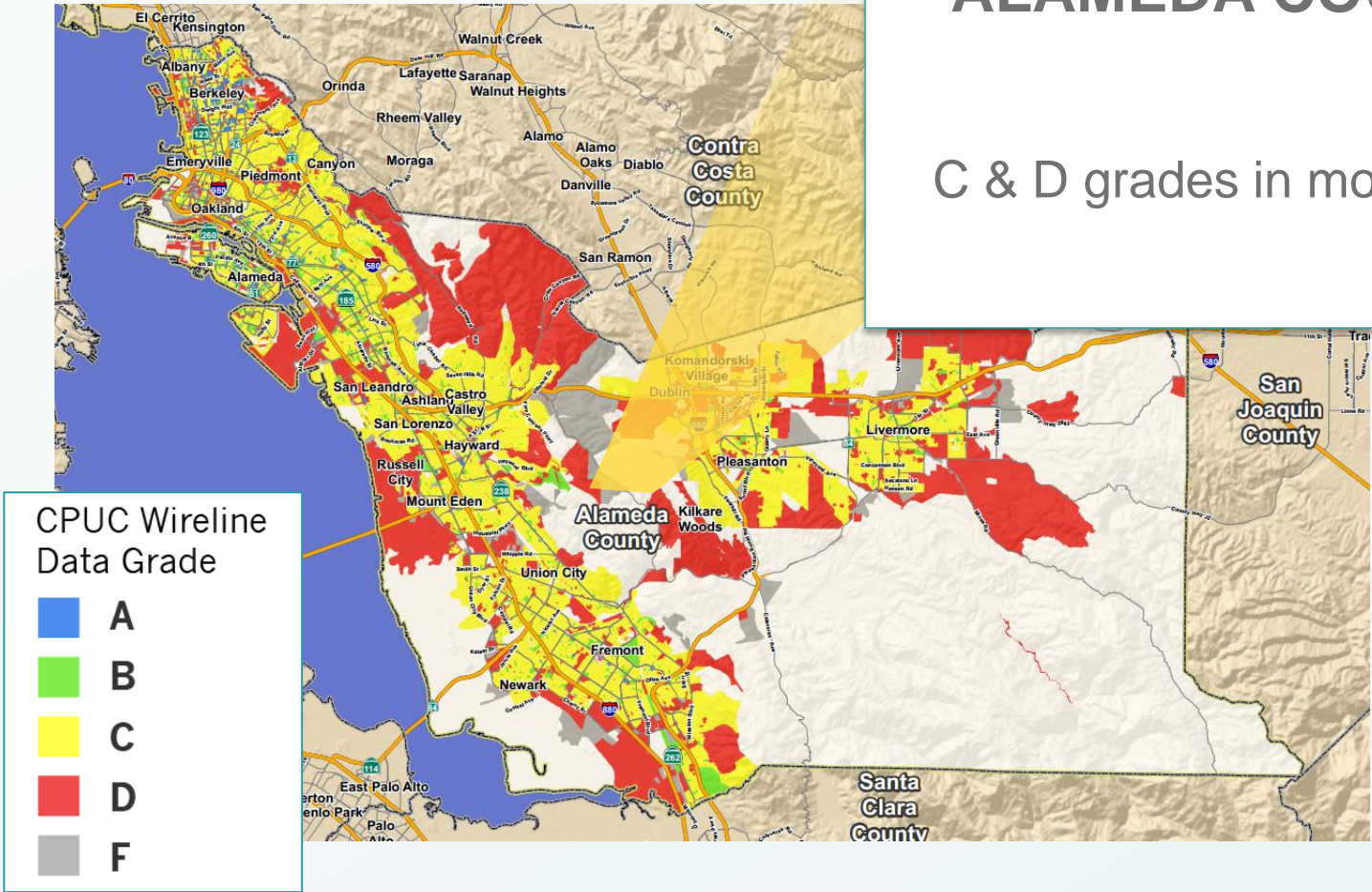
Top 5 Cities:

- Alameda
- Berkeley
- Concord
- Pleasant Hill
- Walnut Creek



Alameda County: Grades for Residential Broadband

ALAMEDA COUNTY
C & D grades in most cities

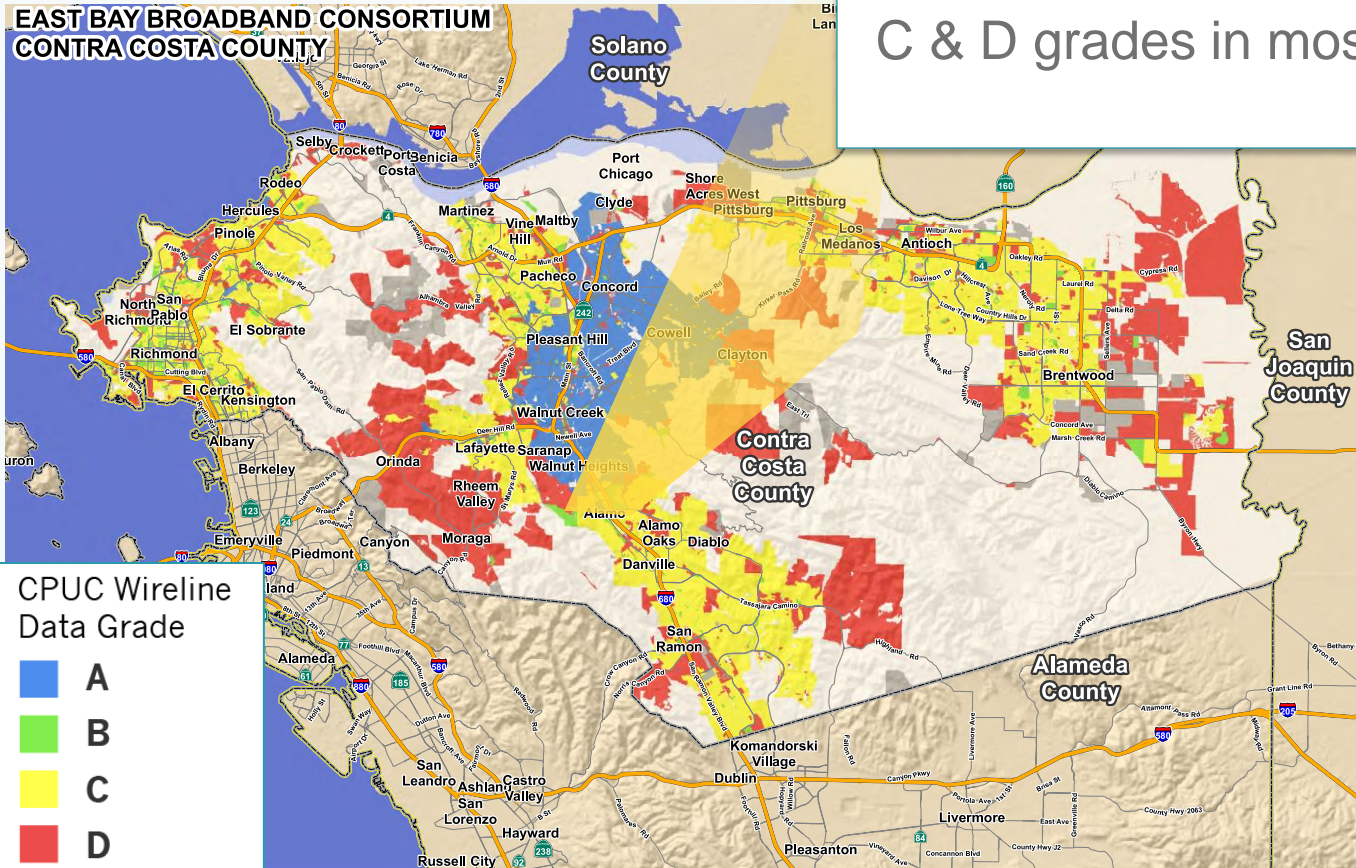


Contra Costa County: Grades for Residential Broadband

CONTRA COSTA COUNTY

C & D grades in most cities

EAST BAY BROADBAND CONSORTIUM
CONTRA COSTA COUNTY



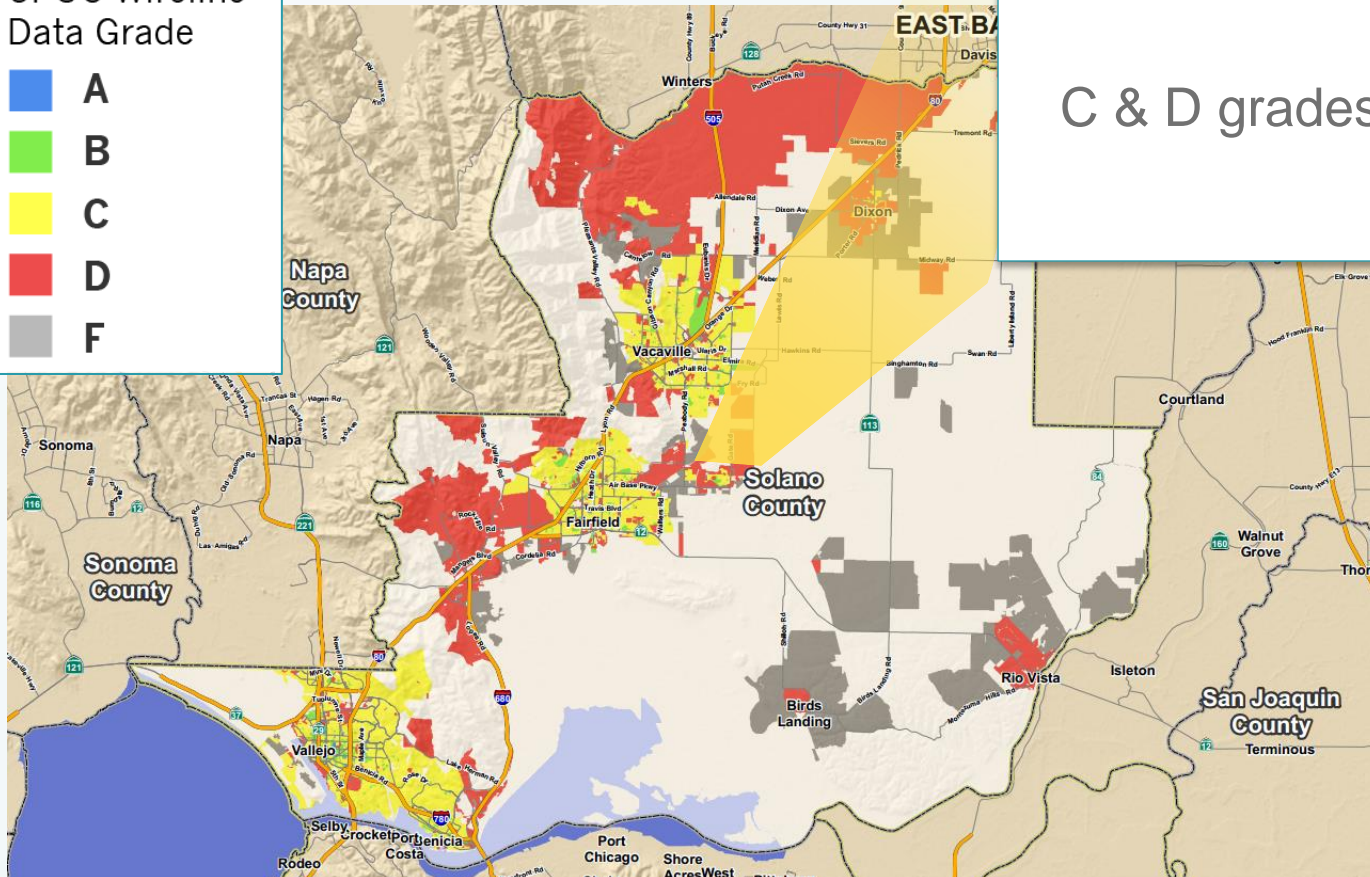
CPUC Wireline
Data Grade

- A
- B
- C
- D
- F

Solano County: Grades for Residential Broadband

CPUC Wireline
Data Grade

- A
- B
- C
- D
- F



SOLANO COUNTY

C & D grades in most cities

Overall, the East Bay Has a Passing Grade

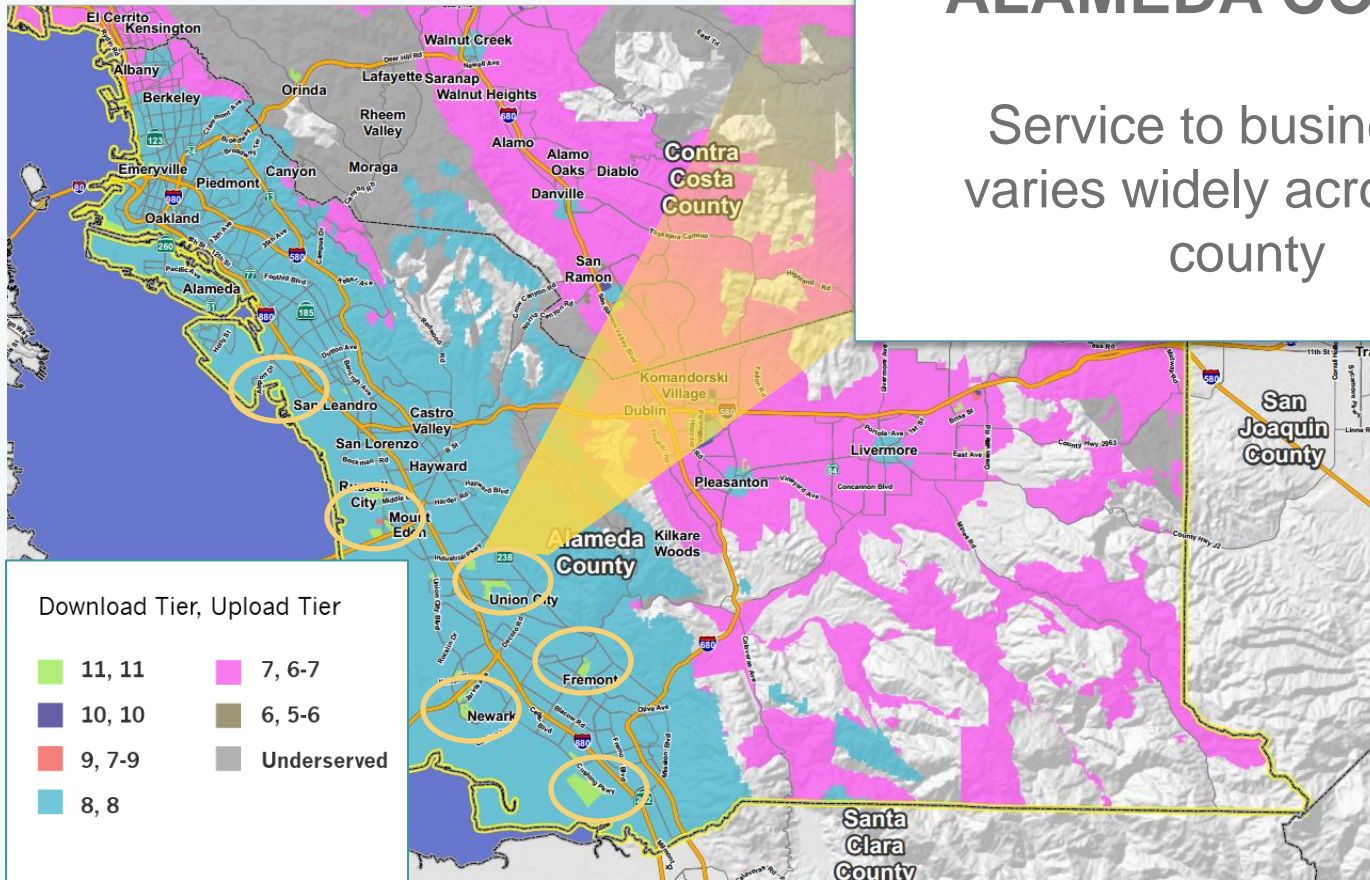
Residential

Alameda County	C
Contra Costa County	C+
Solano County	C-
East Bay Region	C

Q

Is a passing grade good enough?

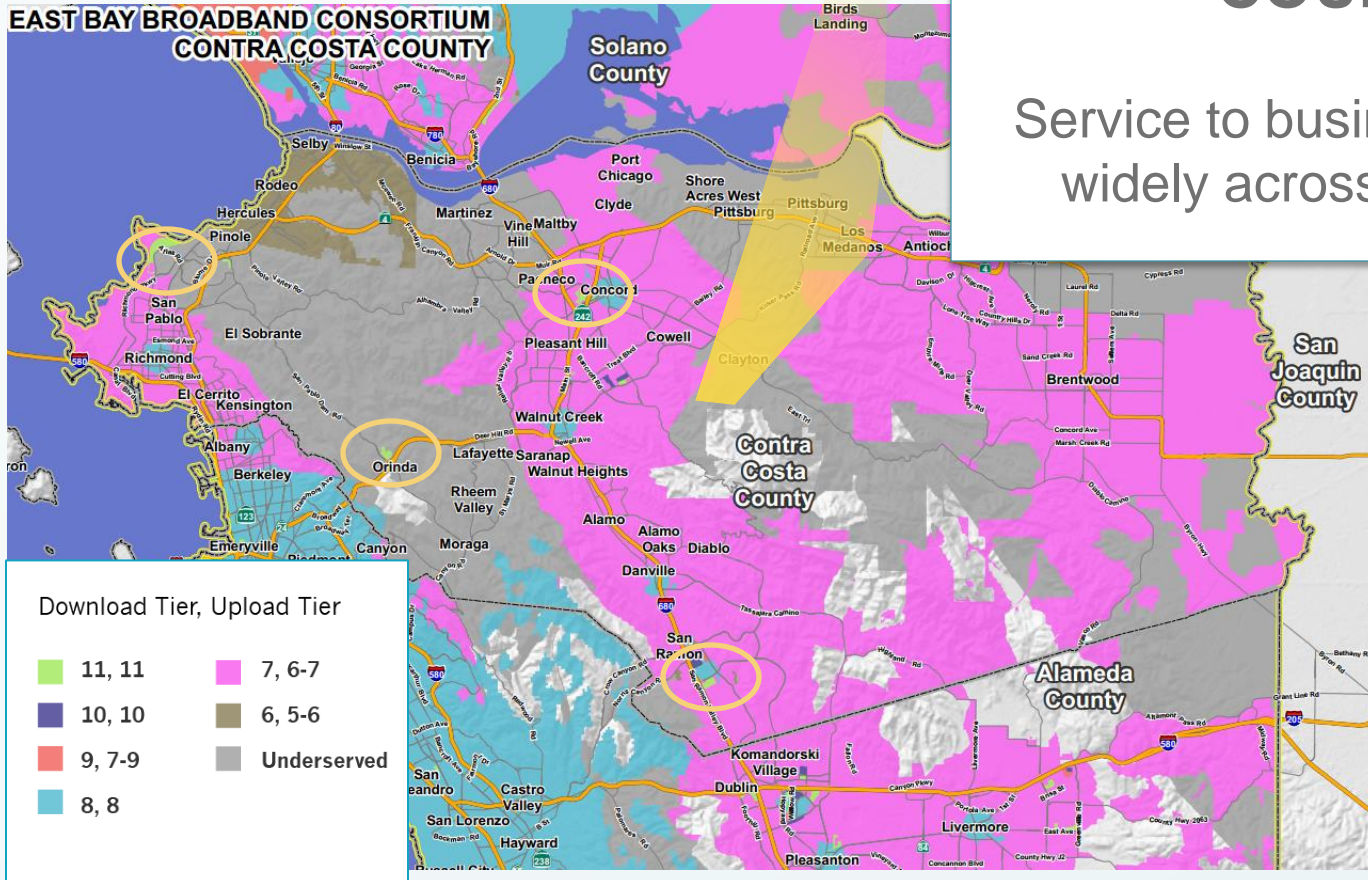
Alameda County: Map of Business Broadband Service



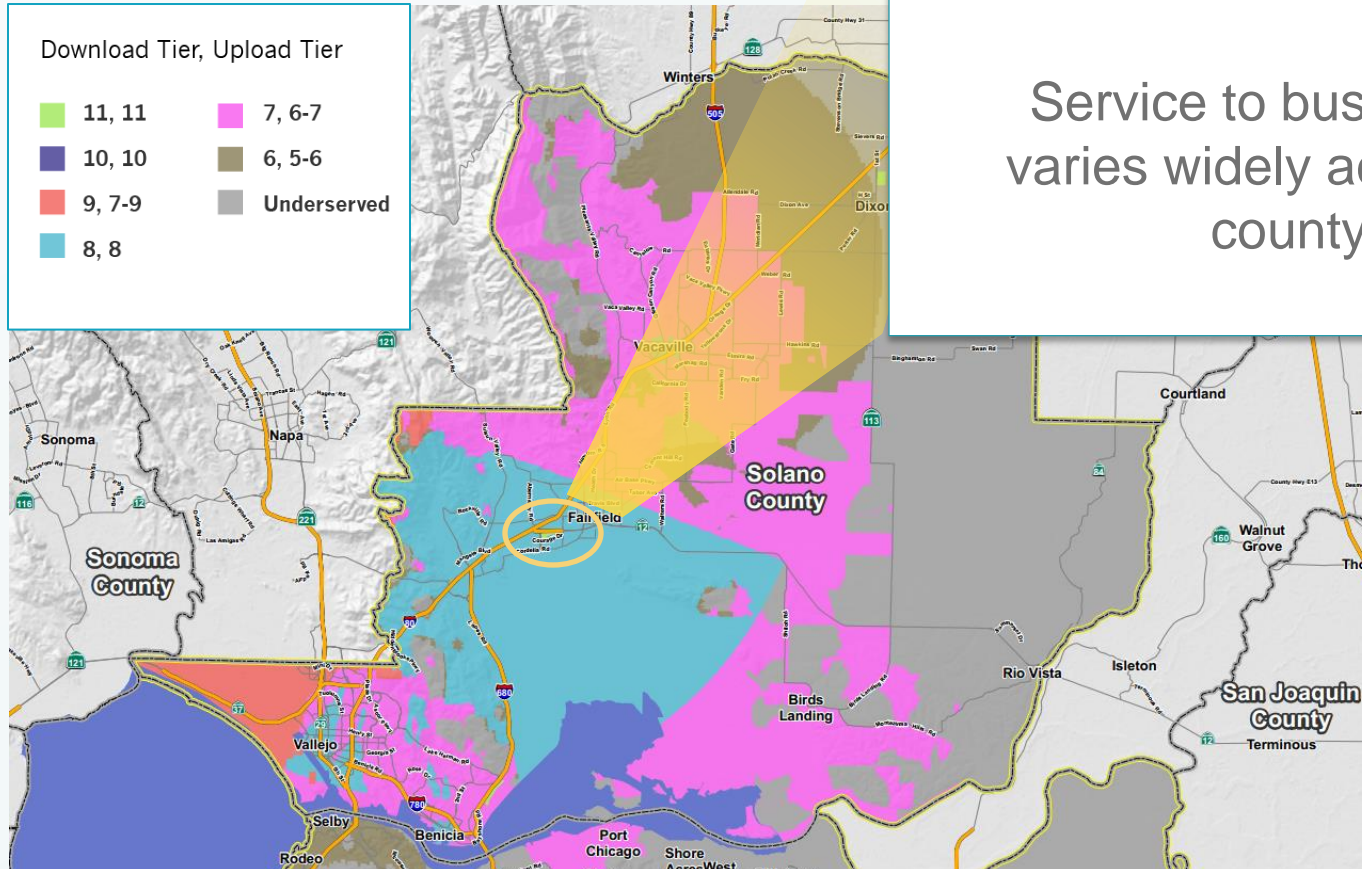
Contra Costa County: Map of Business Broadband Service

CONTRA COSTA COUNTY

Service to businesses varies widely across the county



Solano County: Map of Business Broadband Service



SOLANO COUNTY

Service to businesses varies widely across the county

East Bay's Current Broadband Status

Broadband is Barely Adequate

Region meets statewide averages for residential broadband availability and core network infrastructure. However:

- Gaps exist in urban coverage and adoption rates
- There is room for improvement in mobile coverage, even in urban regions
- Parts of the East Bay are lagging behind on broadband
- Future demand requires that we improve our current infrastructure

East Bay's Current Broadband Status

The Digital Divide

Percentage of people on the wrong side of the digital divide:

- CA – Over 25%
- East Bay – Over 20%
 - Alameda – 23.5%
 - Contra Costa – 17.4%
 - Solano – 24.5%

Source: Public
Policy Institute
Study

Digital Inclusion Solution

East Bay Connects joined OTX West to offer:

- An affordable broadband subscription (under \$10/month)
- Free home computer, monitor, peripherals, and software
- Free digital literacy training
- A year of free tech support



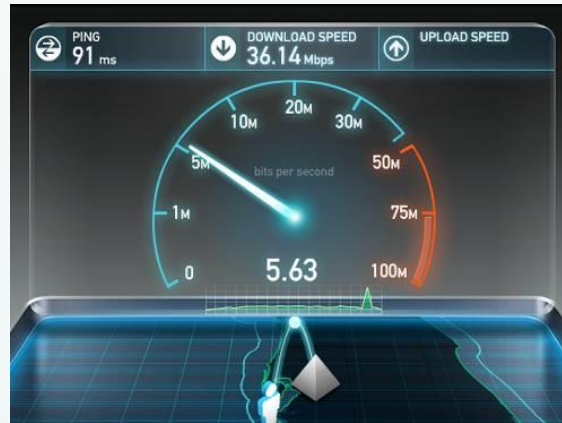
Strong Broadband Models

Concord



Competition

Broadband Providers



Investment

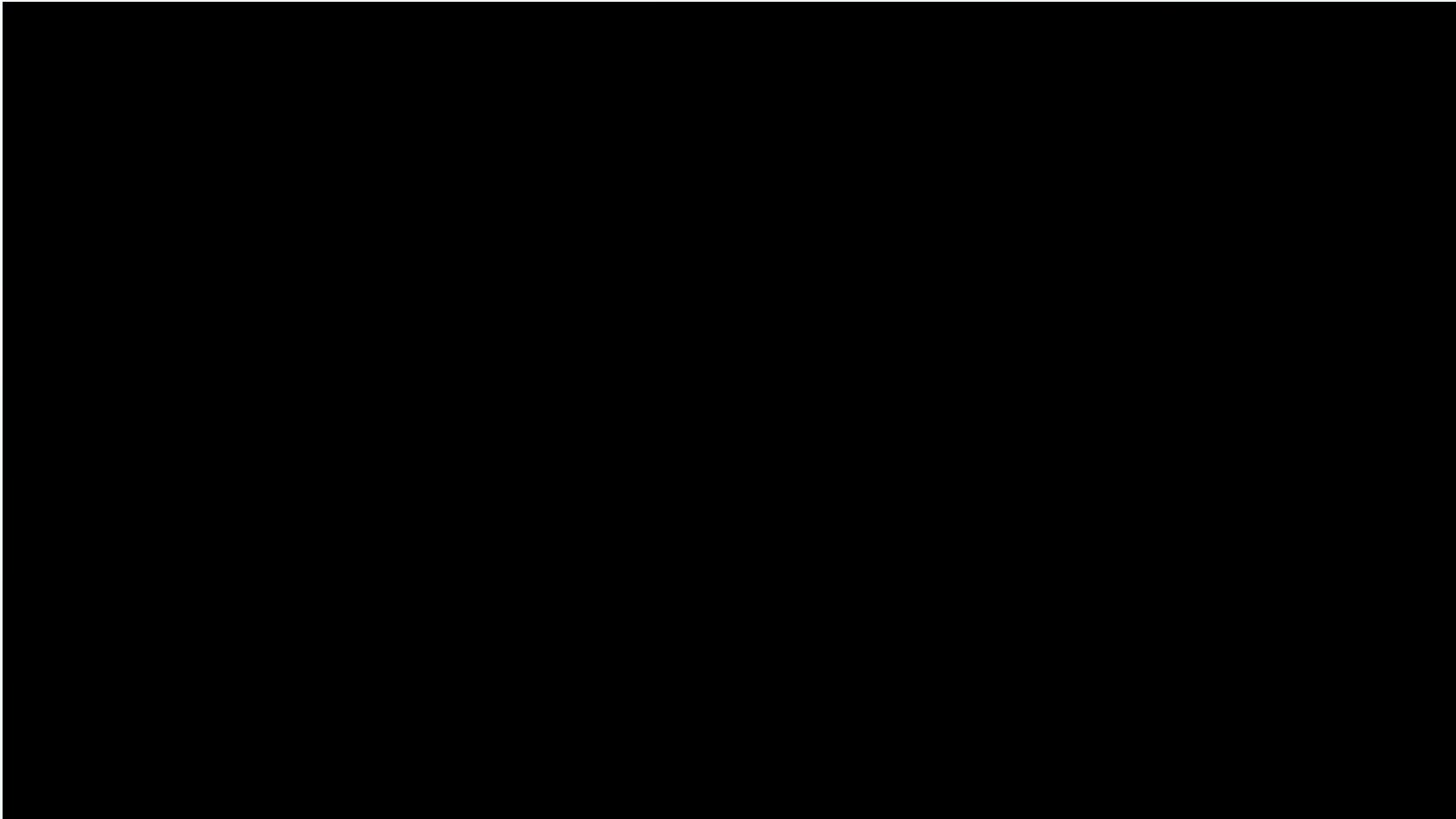
Lit San Leandro



Partnership

The Impact of Strong Broadband

Bishop Ranch



What Local Government Can Do

- General Plan Element
- Policies
- Ordinances and permitting
- Provide information about East Bay Connects! & East Bay Broadband Consortium
- Donate used computers for East Bay Connects!



Adopt the Pledge



“LET’S GET FAST” PLEDGE

Because we recognize and understand the critical importance of a strong broadband – or high-speed wireless – infrastructure to our community and to businesses in the East Bay and because we recognize that our policies and practices have a direct impact on the East Bay’s broadband infrastructure and the ability of companies in the region to create jobs, the City/County of _____ officially endorses the East Bay Broadband Consortium’s *Let’s Get Fast* Pledge.

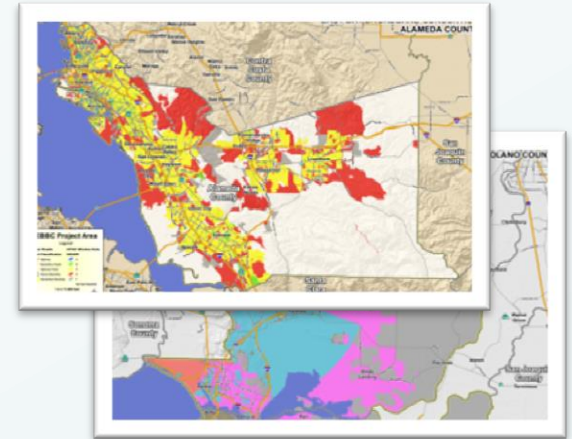
We Pledge:

- *To acknowledge and support the importance of broadband infrastructure to economic development, efficient delivery of services, education, healthcare, public safety and civic participation;*
- *To develop broadband-friendly strategies and policies to the extent needed and feasible in our community;*
- *To support the work of the East Bay Broadband Consortium whenever possible; and,*
- *To share stories of our own broadband efforts with the East Bay Broadband Consortium so they can spotlight regional successes and share them with other communities across the East Bay.*



EBBC Can Help

- Maps of East Bay broadband capacity
- Maps with grades of East Bay's broadband infrastructure
- Draft broadband pledges, resolutions, policies and strategies
- Information on other successful broadband campaigns, models and resources
- Downloadable presentations and fact sheets
- Information about the East Bay Connects! Campaign



How Can We Stay Connected?

www.ebbroadband.org

Visit us on **Facebook**

Follow us on **Twitter**

Sign up to our **newsletter**

Join the **East Bay Broadband Consortium**

Questions?



@eastbayconnects

Let's Invest in Our Future Today



www.ebbroadband.org